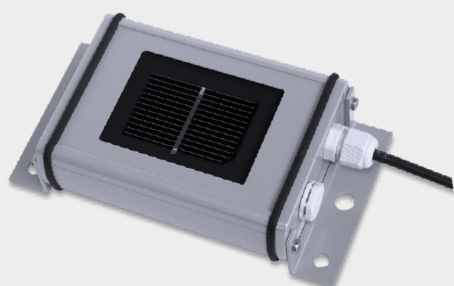
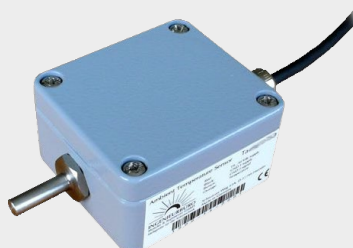


# Environmental Sensors

SE1000-SEN-IRR-S1, SE1000-SEN-TAMB-S2  
SE1000-SEN-TMOD-S2, SE1000-SEN-WIND-S1



Irradiance sensor



Ambient Temperature sensor



Module Temperature sensor



Wind Velocity sensor

## Environmental Monitoring of your SolarEdge System

// Connect environmental sensors to the SolarEdge Control and Communication Gateway for monitoring of your site

// Used to calculate site performance ratio

// Irradiance, temperature and wind measurements

# / Environmental Sensors

SE1000-SEN-IRR-S1, SE1000-SEN-TAMB-S2,  
SE1000-SEN-TMOD-S2, SE1000-SEN-WIND-S1

	Irradiance SE1000-SEN-IRR-S1	Ambient Temperature SE1000-SEN-TAMB-S2	Module Temperature SE1000-SEN-TMOD-S2	Wind Velocity SE1000-SEN-WIND-S1	UNIT
<b>OUTPUT</b>					
Electrical output range	0-1.5V	0-10V	4-20mA	4-20mA	
<b>MEASUREMENT</b>					
Range	0-1500 W/m <sup>2</sup>	-40 to 90 °C / -40 to 194 °F	-40 to 90 °C / -40 to 194 °F	0-50 m/s	
Accuracy	±5 W/sq.m ±2.5% of measuring value	1% of full scale	1% of full scale	±0.5 m/s or ±3% of measuring value	
<b>INSTALLATION SPECIFICATIONS</b>					
Commercial Gateway (sold separately; SE1000-CCG-G-S1)	Needed				
Dimensions	155 X 85 X 39 / 6.1 X 3.4 X 1.6	64 x 58 x 34 / 2.5 x 2.3 x 1.3	64 x 58 x 34 / 2.5 x 2.3 x 1.3	165 x 105 x 105 / 6.5 x 4.2 x 4.2	mm / in
Weight	350 / 0.77	260 / 0.57	350 / 0.77	750 / 1.65	gm / lb
Enclosure type	Powder-coated aluminum	Powder-coated aluminum	Powder-coated aluminum	Housing - Aluminum (AlMgSi1) Cup star - Synthetic, with fibre glass (PC-GF10) Bottom - Synthetic (POM H2320)	
Operating Temperature	-35 to 80 / -31 to 176	-40 to 80 / -40 to 176	-40 to 80 / -40 to 176	0 to 70 / 32 to 155	°C / °F
Protection Rating	IP65	IP67		IP55	
Manufacturer	Ingenieurbüro Mencke & Tegtmeier GmbH				
Manufacturer Part Number	Si-V-1.5TC	Ta-V-4090	Tm-I-4090	Vwind-420 4.3519.00.141	

\*The warranty and service for the sensors is provided directly by Ingenieurbüro Mencke & Tegtmeier GmbH; for more details, please see <http://www.imt-solar.com/products.html>